

● Standard Model Nos.

Bushingmount type:

With lug terminals:

- 12HP-5 (5-turn)
- 12HP-10 (10-turn)

With pin terminals for p.c. board:

- 12HP-5P (5-turn)
- 12HP-10P (10-turn)

Servomount type:

- 12HPS-5 (5-turn)
- 12HPS-10 (10-turn)

● General Specifications

Standard Resistance

Range: 100Ω to 50kΩ (5-turn)
100Ω to 100kΩ (10-turn)

Max. Practical

Resistance Value: 70kΩ (5-turn)
150kΩ (10-turn)

Total Resistance

Tolerance: Standard Class ±3% (H)
Precision Class ±1% (F)

Independent Linearity

Tolerance:

	5-turn	10-turn
Standard Class	±0.35%	±0.25%
Precision Class	±0.2%	±0.1%
(Within 5kΩ)	(±0.25%)	(±0.15%)

Power Rating:

0.75W (5-turn)
1.5W (10-turn)

Noise:

Within 100Ω E.N.R.

Electrical Travel:

360° × n ± 5° (n: No. of turns)

Mechanical Travel:

360° × n + 15°₀ (n: No. of turns)

Insulation Resistance:

Over 1,000MΩ at 500V.D.C.

Dielectric Strength:

1 minute at 1,000V.A.C.

Starting Torque:

Within 3mN·m (30gf·cm)
(Bushingmount type)
Within 2mN·m (20gf·cm)
(Servomount type)

Stopper Strength:

Approx. 0.15N·m (1.5kgf·cm)

Max. Torque exerted on fastening the mounting nut to the bushing:

Within 0.8N·m (8kgf·cm)

Max. Working Voltage:

450V

Resist. Temperature Coefficient of Wire:

±20p.p.m./°C

Mass:

Approx. 10g
(Both 5-turn and 10-turn)

● Standard Resistance Values ■ No. of Wire Turns ■ Resistance Wire Used

Resist. Value (Ω)	100	200	500	1k	2k	5k	10k	20k	50k	100k
12HP-5	920	1,190	1,250	1,510	1,790	2,380	3,120	3,800	5,430	—
12HP-10	1,690	1,850	2,560	2,500	3,030	4,170	4,760	6,250	8,330	10,870
Resist. Wire Used	Cu-Ni System				Ni-Cr System					

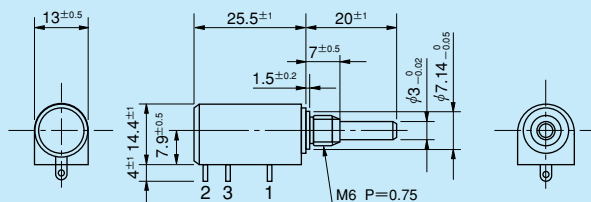
● Special Specifications Available

3-turn type (S12HP-3), Lower resistance values (20Ω, 50Ω), Rear shaft (0.8mm dia. and 10mm length), Special machining on the shaft, Simple sealed housing (in case of servomount type, the housing length becomes longer by 1.5mm).

● Standard Dimensions

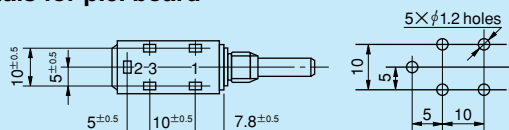
■ Bushingmount type

● With lug terminals



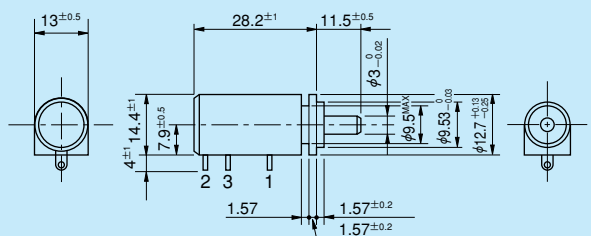
● With pin terminals for p.c. board

Terminal Holes Layout



Note: 1. pc. each inner teeth washer and hex nut are attached.
2. Please process the mounting hole on the panel to be mounted with this potentiometer by the diameter of 7.14mm +0.05.

■ Servomount type



Note: 1. Outer dimensions of 5-turn version are same as those of 10-turn.
2. Servomount type with pin terminals for p.c. board is also available.